

# State Road 9B Extension

**C.R. 2209 (St. Johns Parkway)  
to Duval County Line  
St. Johns County, FL**



**Florida Department of Transportation  
Financial Project ID: 431418-2**

# ***Welcome to the Public Hearing***





# **Project Development and Environment (PD&E) Study**

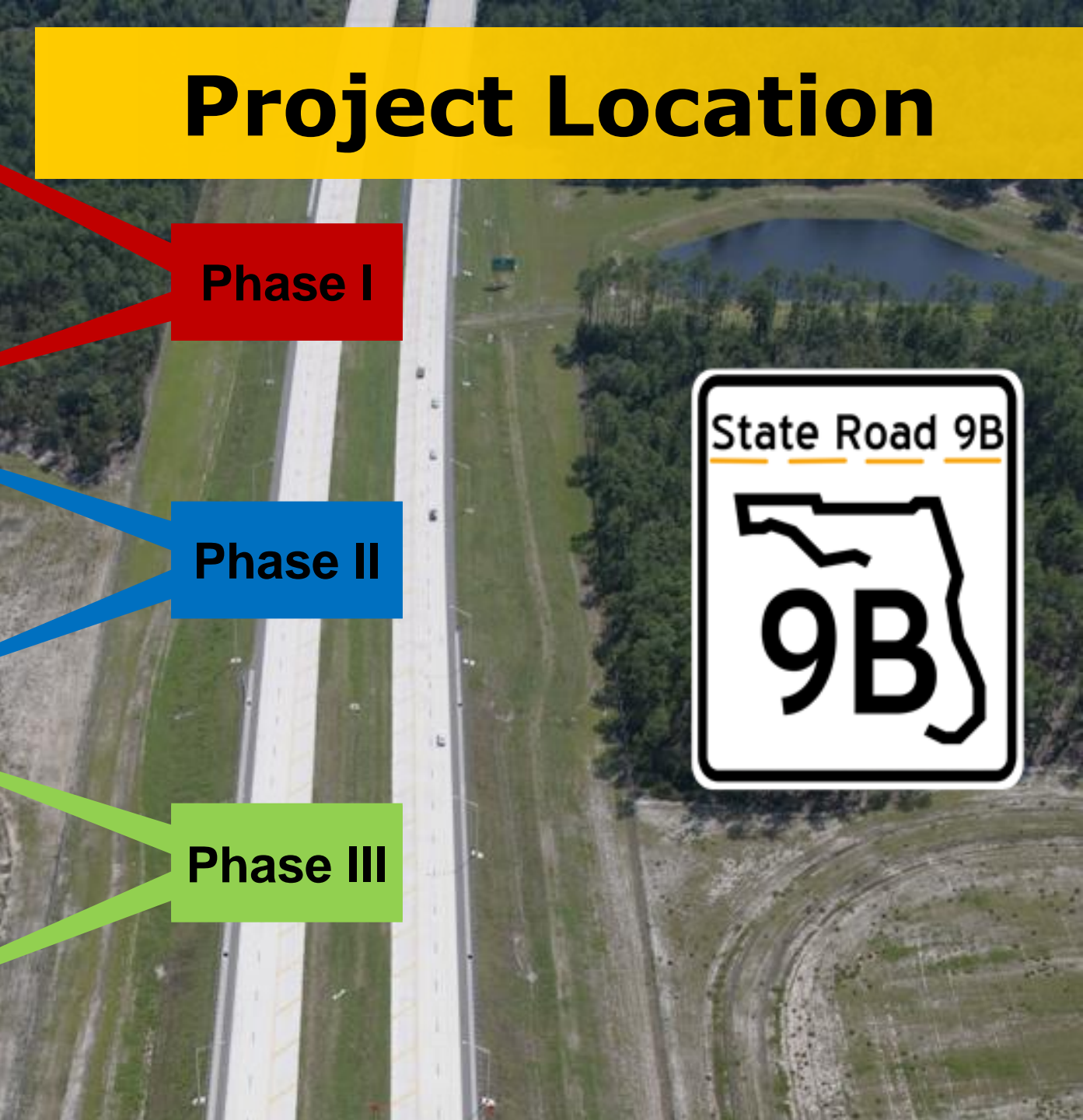
## **SR 9B Extension**

# Project Location

Phase I

Phase II

Phase III



# Project Phases

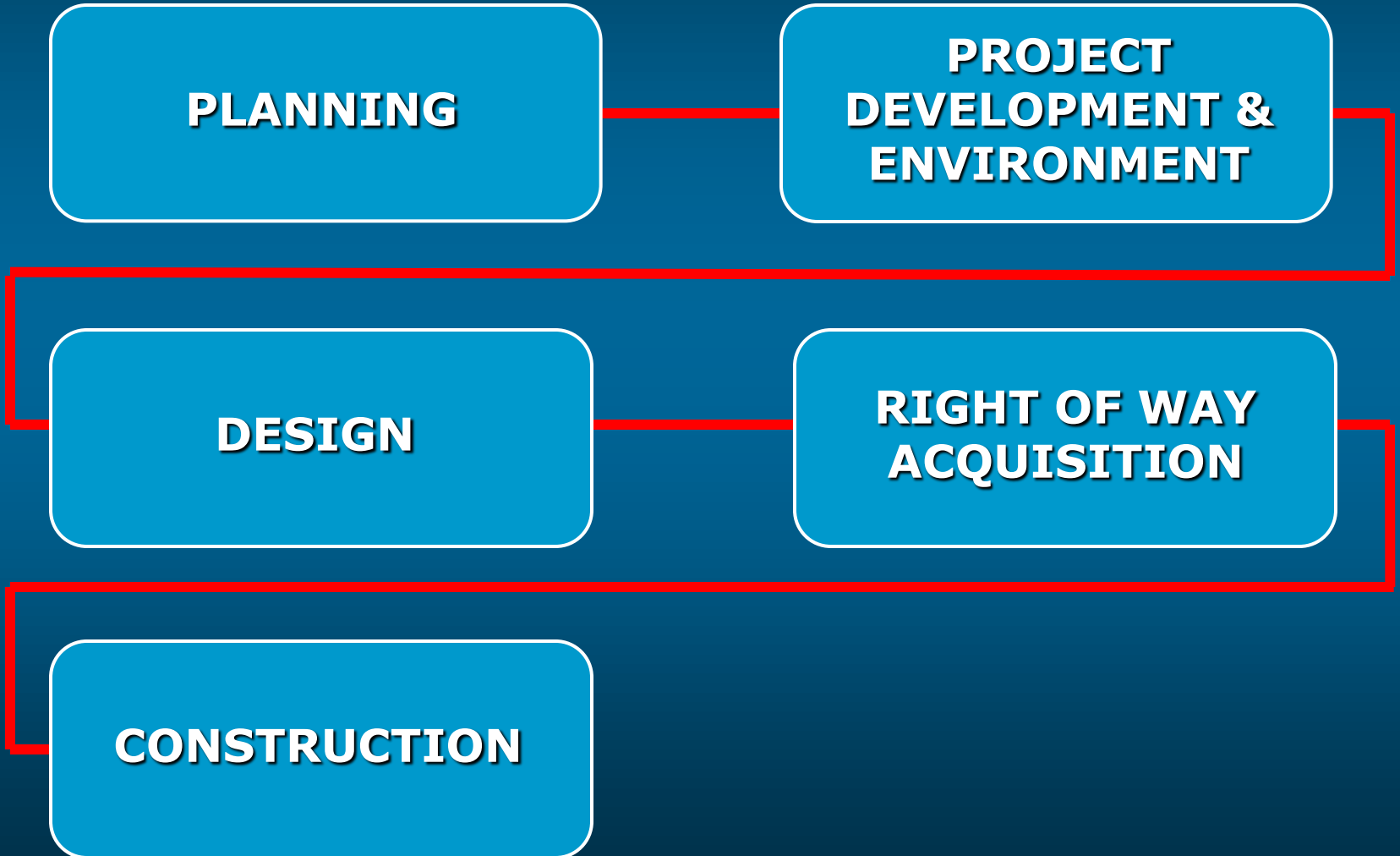
**PLANNING**

**PROJECT  
DEVELOPMENT &  
ENVIRONMENT**

**DESIGN**

**RIGHT OF WAY  
ACQUISITION**

**CONSTRUCTION**



# PD&E Process

- **Data Collection**
- **Alternative Analysis**
- **Public Involvement**
- **Alternative Selection**

# ***Purpose of Public Hearing***



- **Present study findings**
- **Inform you of FDOT proposals**
- **Receive your input**

# Purpose and Need

- Relieve congestion at two adjacent I-95 interchanges
  - I-95/Old St. Augustine Road
  - I-95/CR 210





# Level of Service



**LOS A-B**



**LOS C-D**



**LOS E-F**



# Level of Service

An aerial photograph of a complex highway interchange. A multi-lane road curves from the top left towards the center, crossing over a multi-lane highway that runs horizontally across the middle. Below the highway, several lanes of road lead to a roundabout. The scene includes various vehicles such as cars, trucks, and a large red car carrier. In the background, there are several buildings, including a large white building with a red roof, a parking lot, and a small pond. The surrounding area is lush with green trees and grass. A prominent yellow banner with black text is overlaid across the center of the image.

***Serves Local Traffic***



***Important  
Transportation Link***

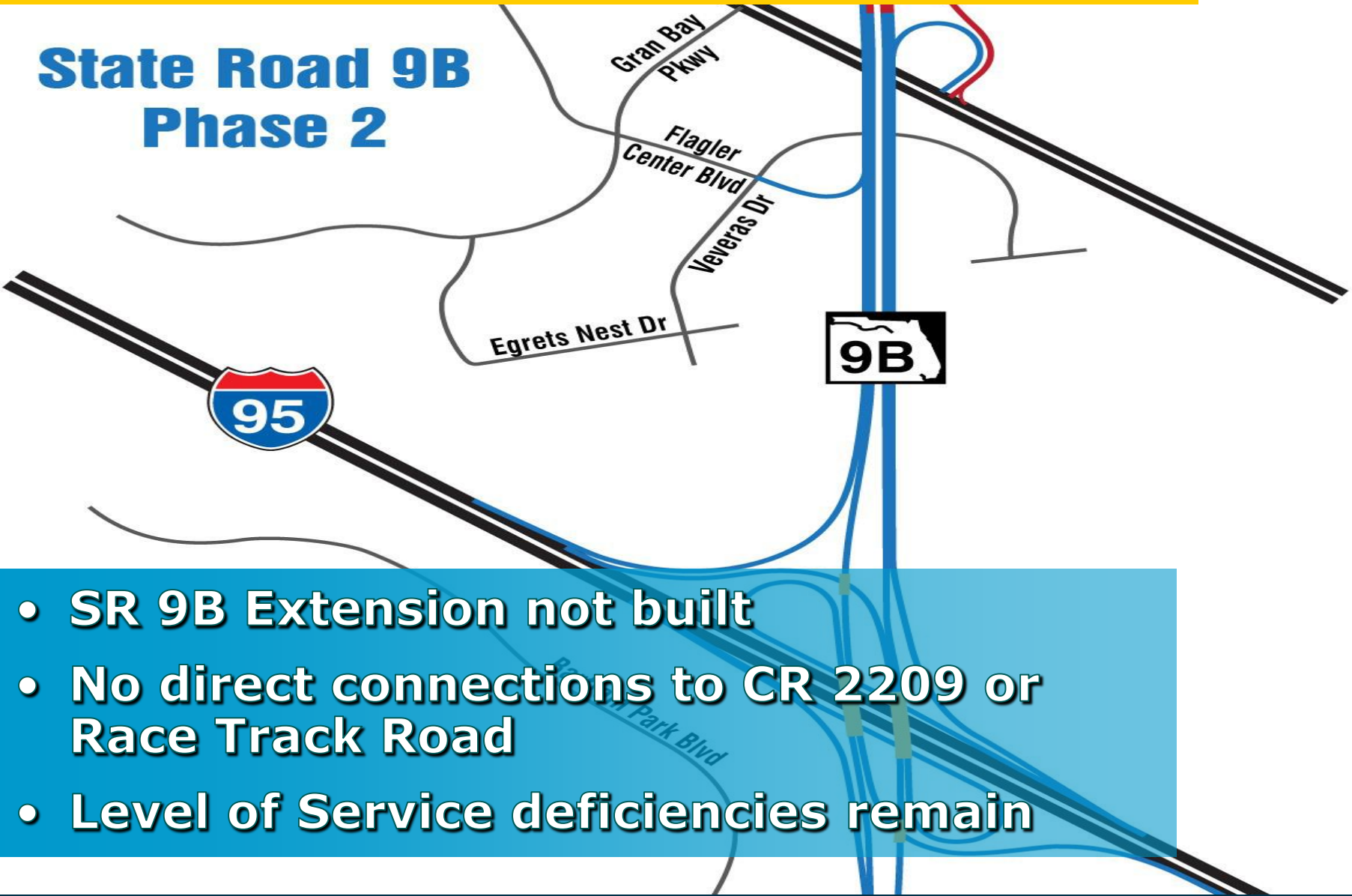
# Alternatives Evaluated

- **No Build Alternative**
- **Transportation Systems Management Alternatives**
- **Build Alternative**

# No Build Alternative



## State Road 9B Phase 2



- SR 9B Extension not built
- No direct connections to CR 2209 or Race Track Road
- Level of Service deficiencies remain

# Transportation Systems Management Alternatives

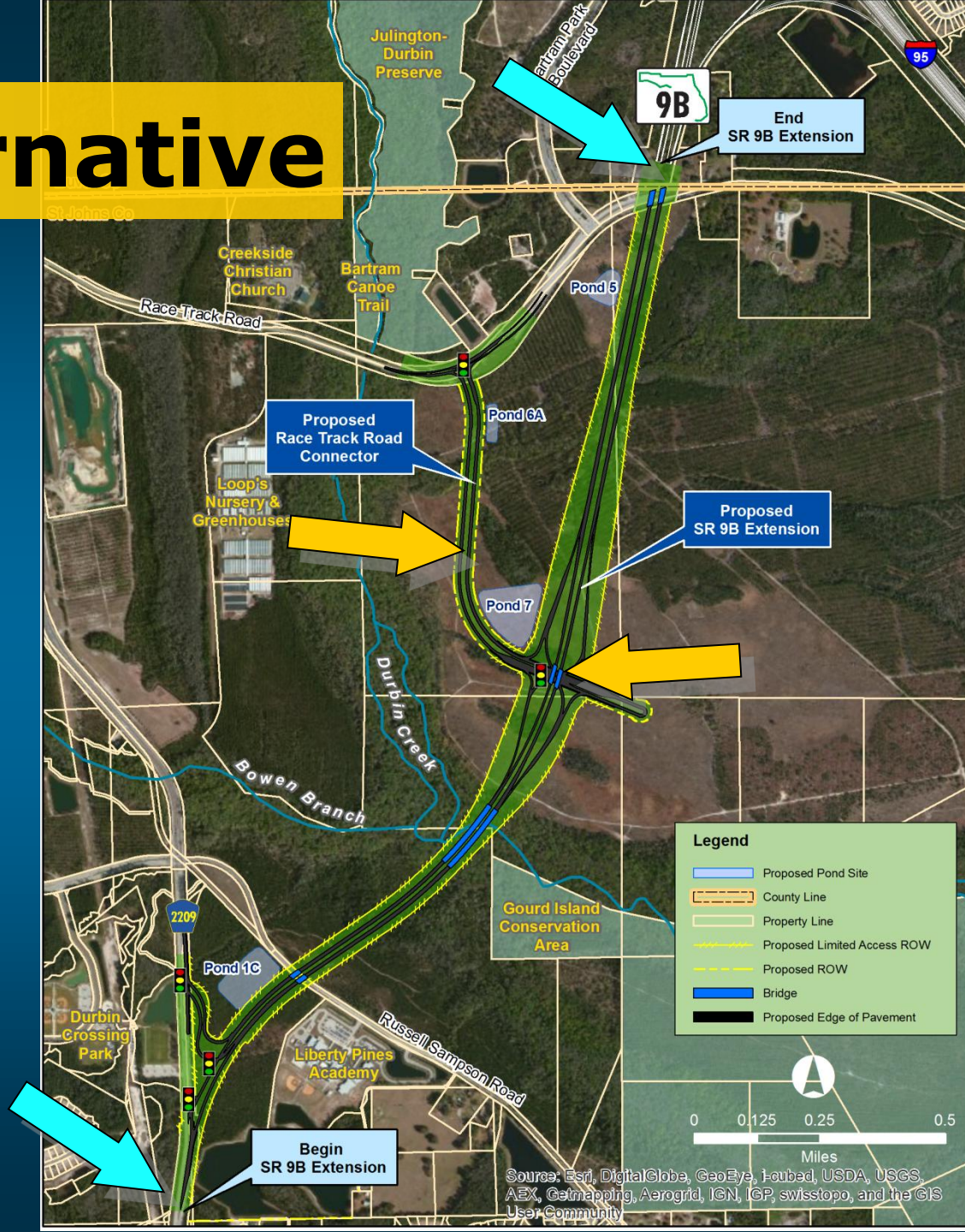


- Optimize existing operations
- Signal and turn-lane improvements
- Will not relieve future congestion

# Build Alternative

- Link CR 2209 to I-95 & SR 9B
- Limited Access Highway
- Interchange and connector to Race Track Road

– *Locally Preferred*



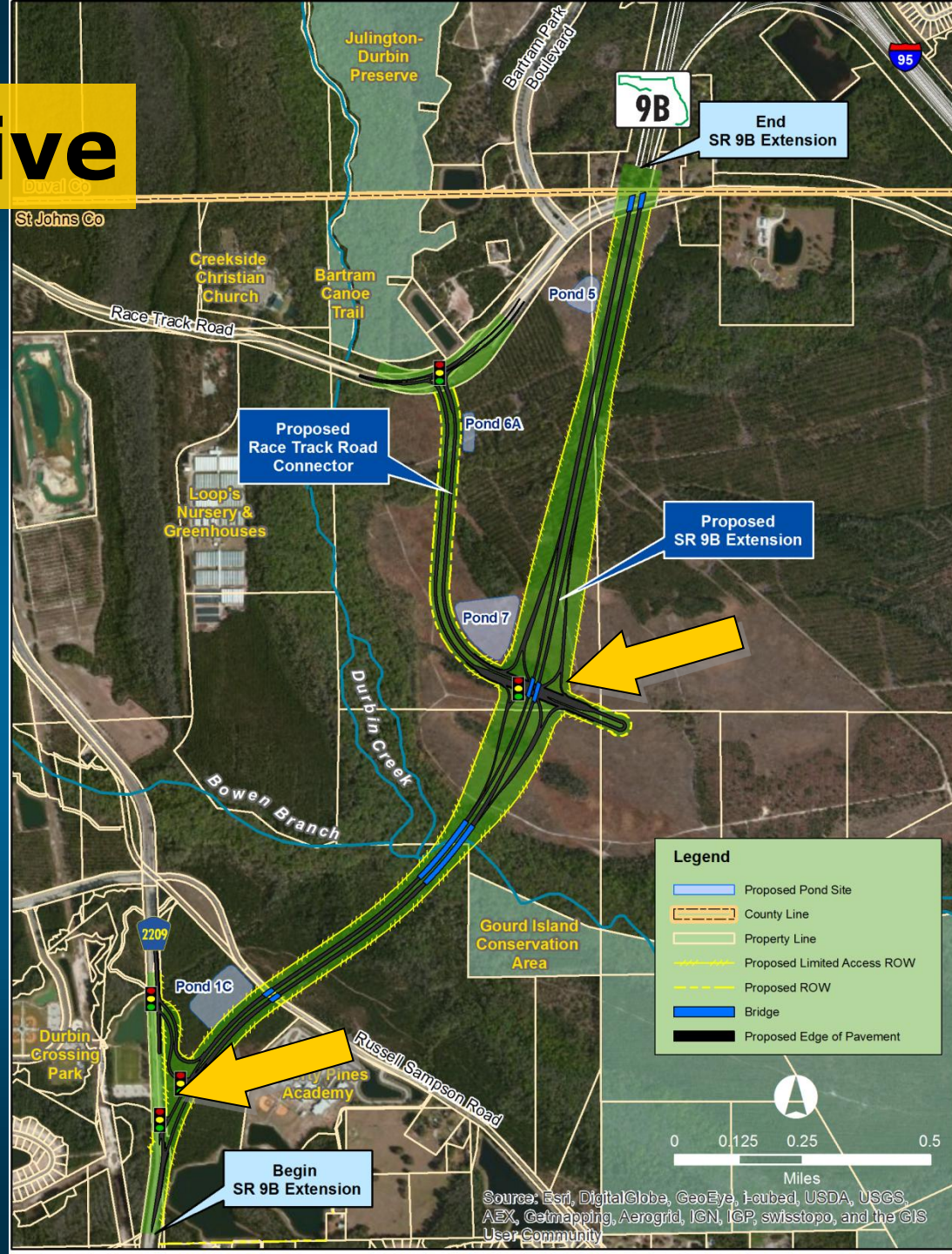


# ***Alternatives Public Meeting April 9, 2013***

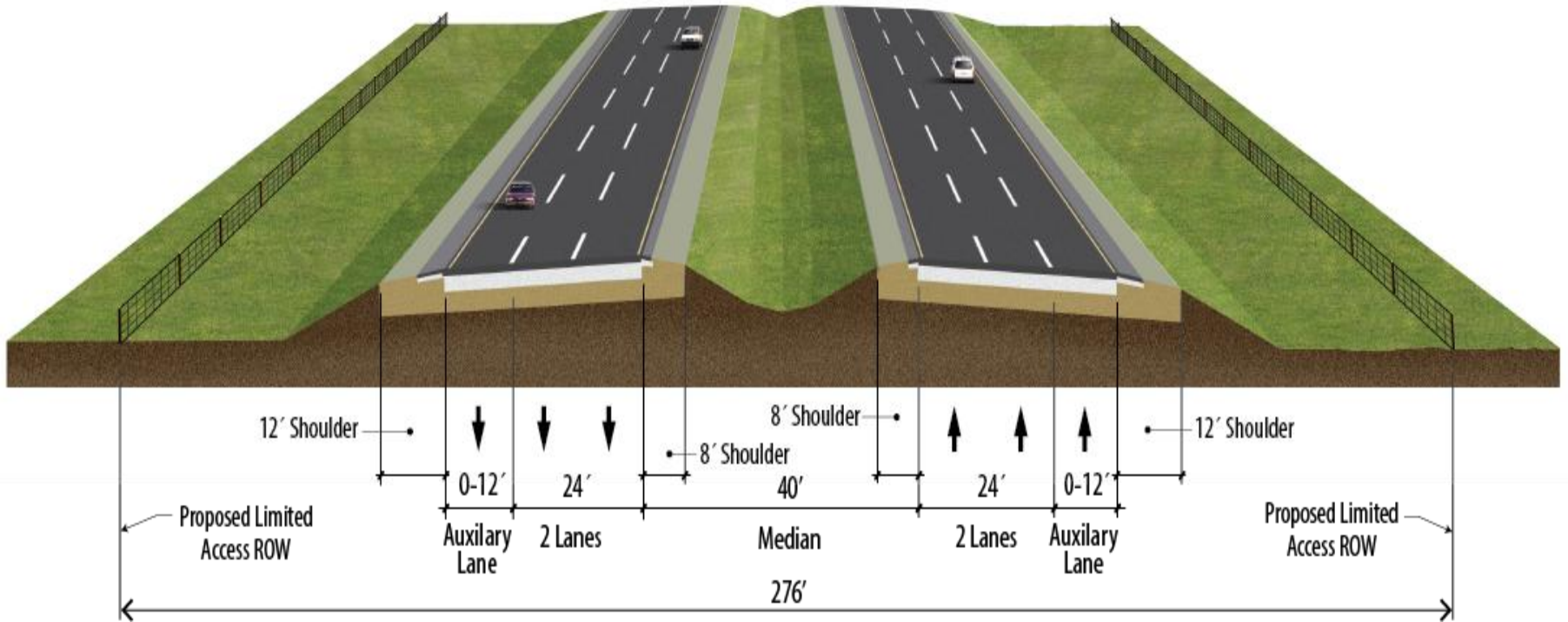


# Build Alternative

- 2.3 miles
- Race Track Road Connector 0.9 miles

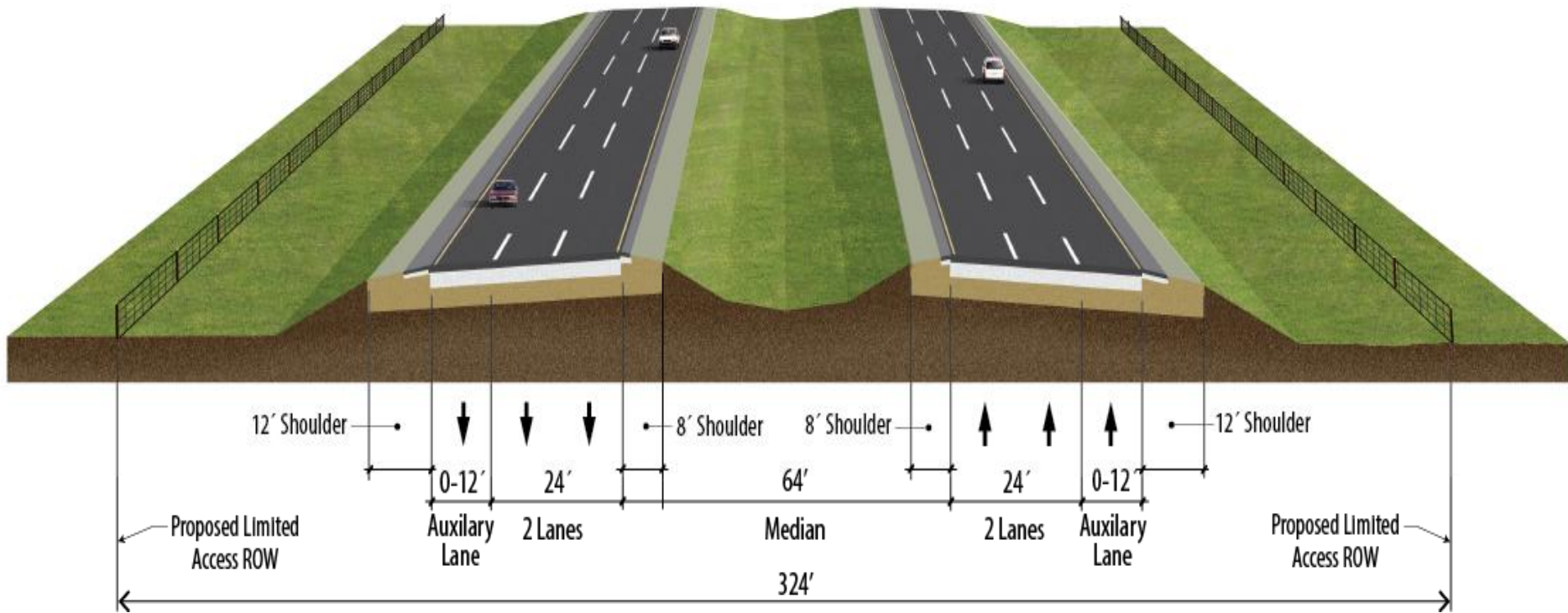


# Typical Section



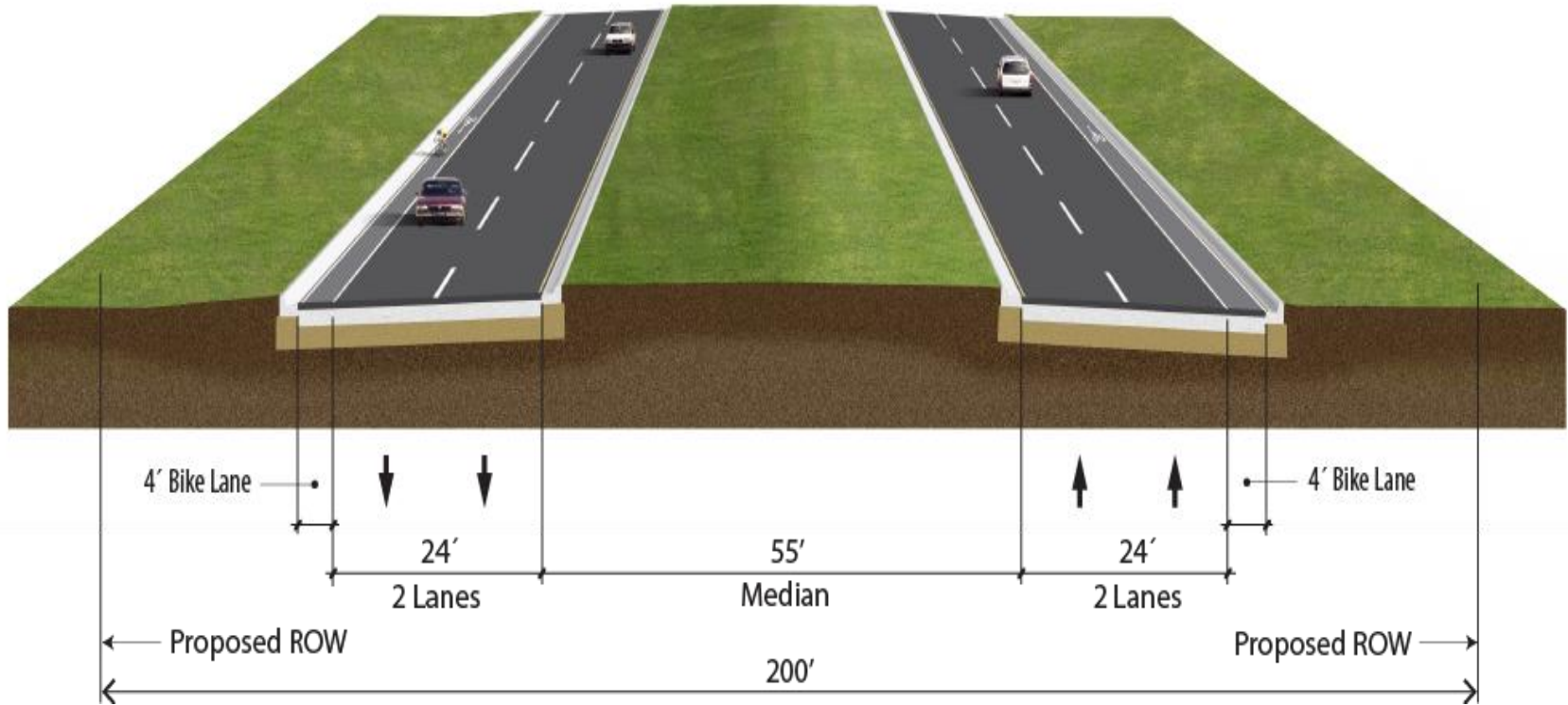
CR 2209 to Race Track Road Connector

# Typical Section



**Race Track Road Connector to Duval County Line**

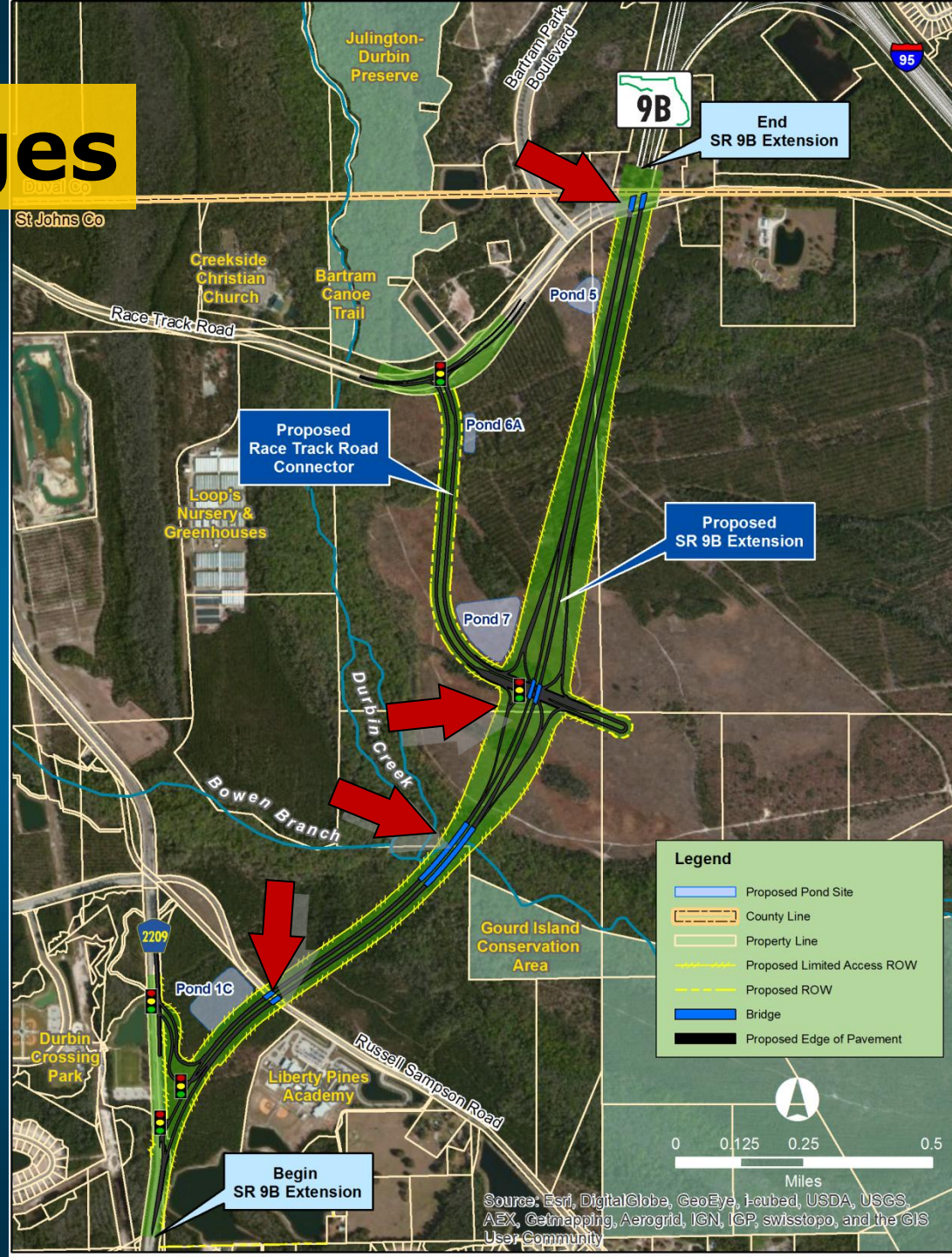
# Typical Section



**Race Track Road Connector**

# Bridges

- Russell Sampson Road
- Durbin Creek
- Race Track Road Connector
- Race Track Road



# Project Costs (Millions)

## Build Alternative

<b>Construction</b>	<b>\$84.8</b>
<b>Engineering/Inspection</b>	<b>\$17.0</b>
<b>Right of Way</b>	<b>\$10.7</b>
<b>Wetland Mitigation</b>	<b>\$4.8</b>
<b>Total</b>	<b>\$117.3</b>



# Project Schedule

## Build Alternative

**PD&E**

**Underway**

**Design**

**2014**

**Right-of-Way**

**On-going**

**Construction**

**2015**



# Comprehensive Plan Consistency

- **Local**

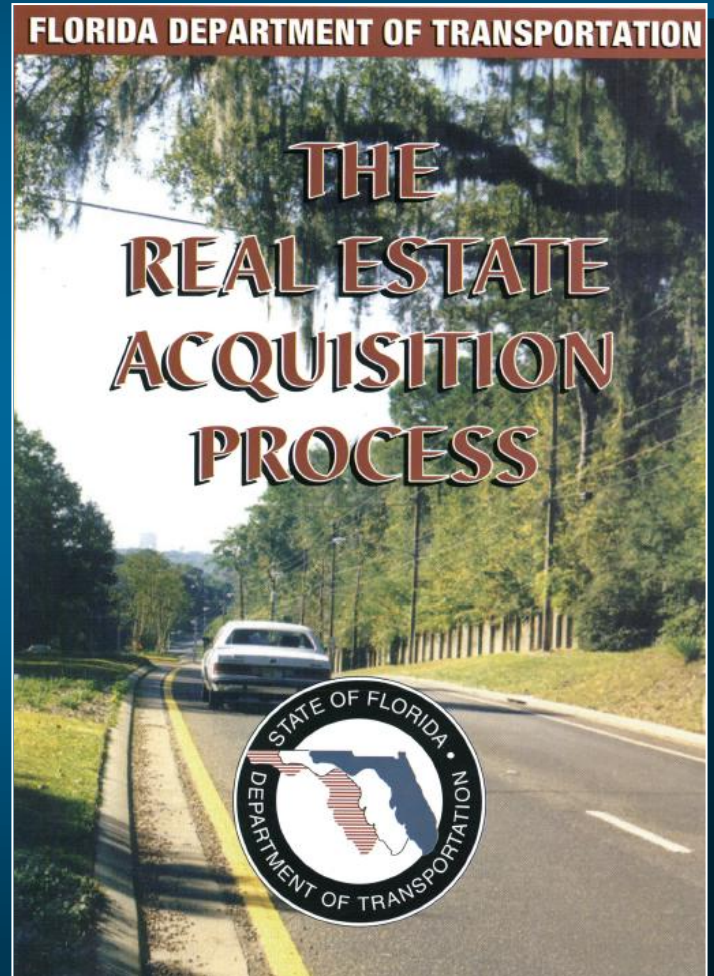
- *The First Coast TPO - Long Range Transportation Plan (LRTP) and Transportation Improvement Program (TIP)*
- *St. Johns County Comprehensive Plan*

- **State**

- *State Transportation Improvement Program (STIP)*
- *FDOT Five-year Work Program*

# Right of Way

- No Homes
- No Businesses
- No Special Use Facilities



# Questions?





# **Environmental Considerations**

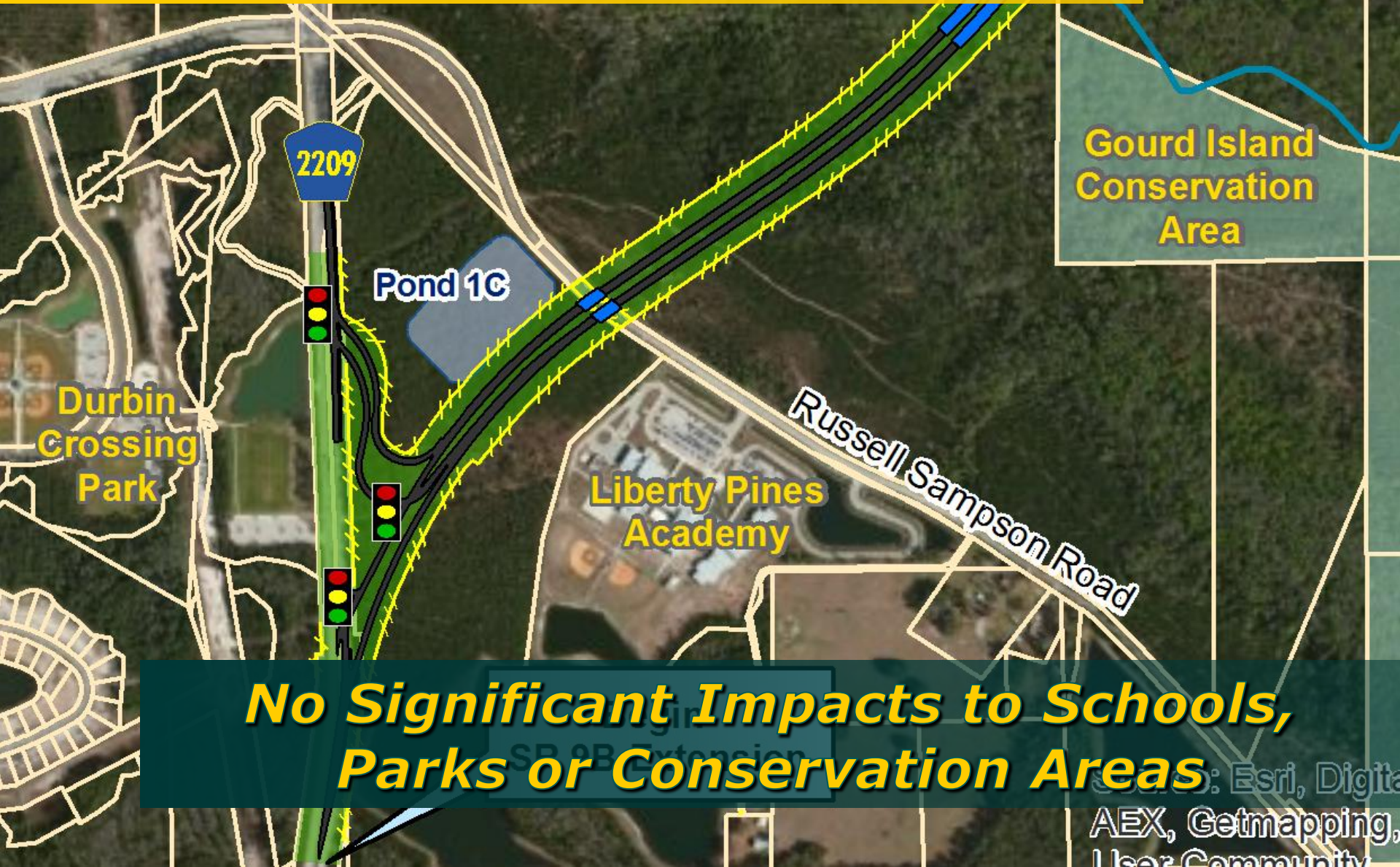
# Cultural Resources



***FHWA, in consultation with the State Historic Preservation Officer (SHPO), has determined:***

- Build Alternative will not have an adverse effect on any eligible resources**

# Community Facilities



***No Significant Impacts to Schools, Parks or Conservation Areas***

# Aesthetic Impacts

A photograph of a road with a large field of yellow flowers in the foreground. The flowers are a mix of yellow and orange, growing in a dense field. The road is paved and has a yellow line on the side. In the background, there are trees and a building. A blue truck is driving on the road.

***Provide Landscaping as Appropriate***

# Air and Noise Studies

- **No significant air quality impacts**
- **No feasible and cost-reasonable solutions to mitigate noise impacts**



# Best Management Practices

- 
- Erosion Control
  - Water Quality Considerations

A photograph of a swampy forest. The water is dark and reflects the surrounding trees. A white vertical pole is visible in the water, likely used for water quality monitoring. The trees are mostly thin and bare, suggesting a wetland environment.

# Water Quality

***No Significant Impacts***

# Executive Orders

*Federal Executive Order 11990*

“Protection of Wetlands”

and

*Federal Executive Order 11988*

“Floodplain Management”

# Wetland Impacts

## Build Alternative

**Wetland Impacts**

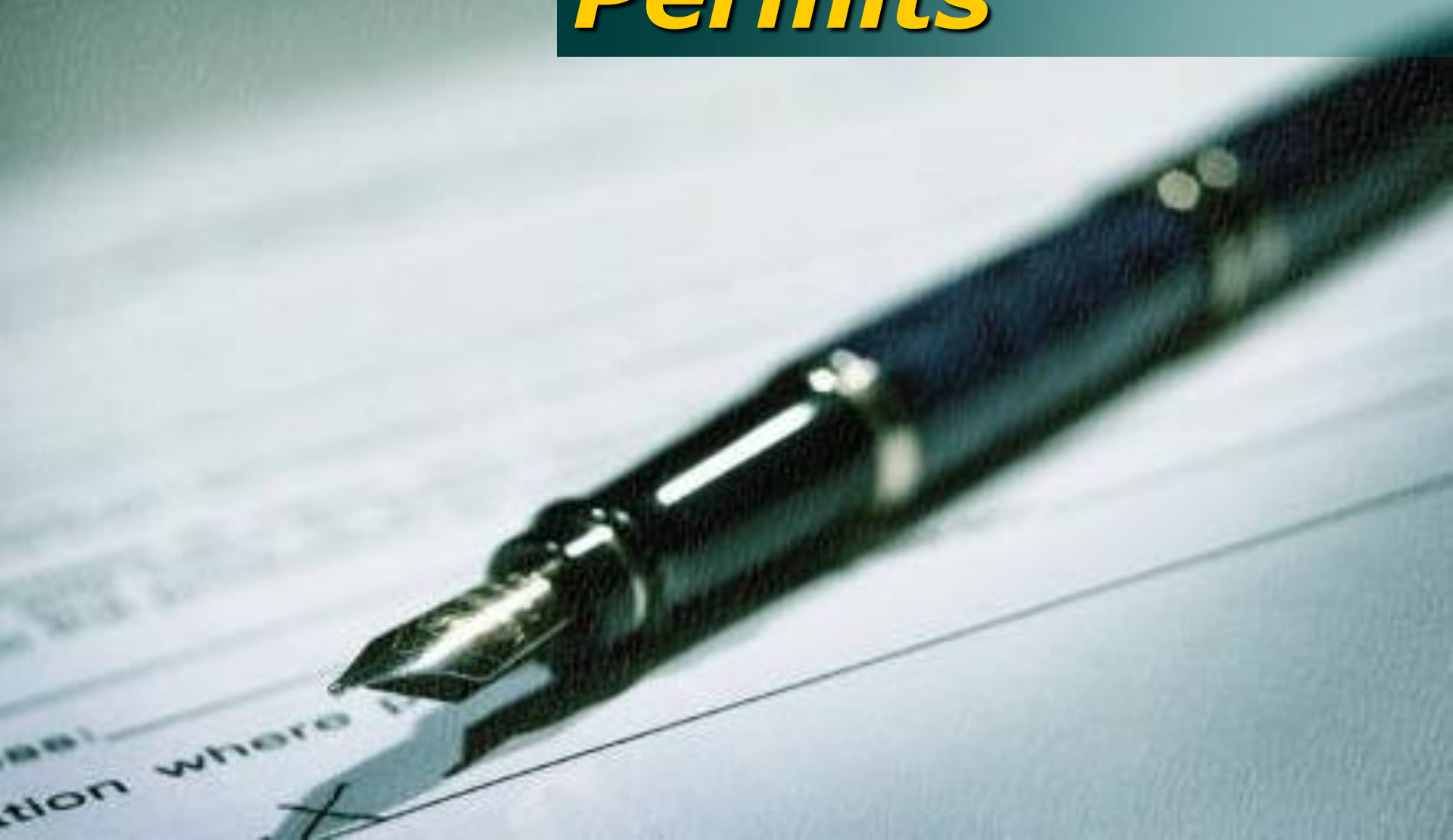
**48 acres**

# Endangered Species



***No Significant Impacts***

# *Permits*



# Summary

- **Locally Preferred Alternative is the Build Alternative**
- **Provide Relief to the Adjacent I-95 Interchanges**
- **Improved Local Access**

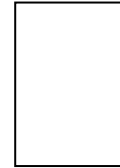
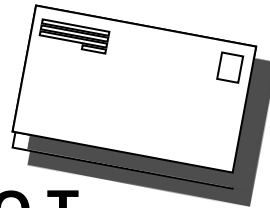
***We welcome your  
comments...***





***Send your comments to the  
address below:***

\_\_\_\_\_  
\_\_\_\_\_  
\_\_\_\_\_  
\_\_\_\_\_



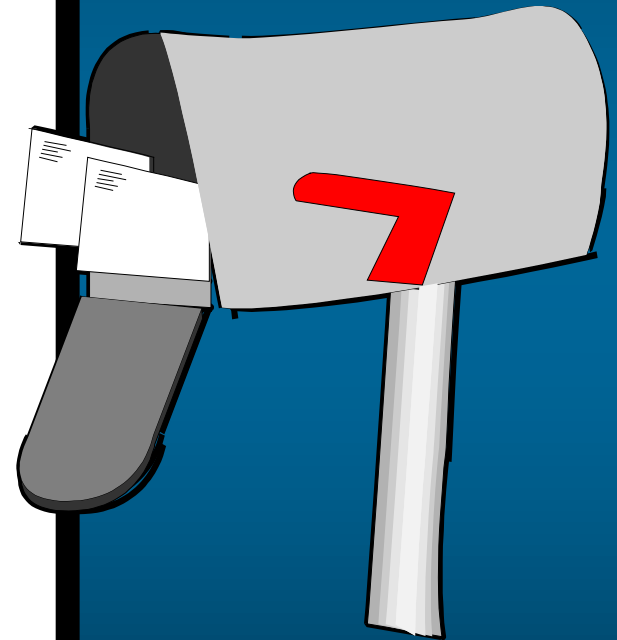
**Florida D.O.T.**

**Attn: Jim Knight, P.E., Project Manager**

**1109 S. Marion Ave., MS 2007**

**Lake City, FL 32025-5874**

**[james.knight@dot.state.fl.us](mailto:james.knight@dot.state.fl.us)**



***All comments received  
within 10 days will be  
included with the official  
transcript***

A stack of papers is shown, with a yellow rectangular overlay on top. The overlay contains the text: "All comments received within 10 days will be included with the official transcript". The papers are stacked and slightly fanned out, showing various colors like white, yellow, and blue. The background is a plain, light-colored surface.

# ***Civil Rights Act of 1964***



# **Equal Opportunity**

## ***Title VI - Non-Discrimination Program***

***Persons may file a formal complaint(s)  
by writing to:***

**Florida D.O.T.  
Administrative Compliance Monitor  
1109 S. Marion Ave., MS 2016  
Lake City, Florida 32025-5874**

**or**

**Florida D.O.T.  
Equal Opportunity Office  
605 Suwannee Street, MS 65  
Tallahassee, Florida 32399-0450**

***Materials are on display tonight  
for your review...***

**Personnel are available to  
answer your questions**



# Contact Information

Florida D.O.T.

Attn: Jim Knight, P.E., Project Manager

1109 S. Marion Ave., MS 2007

Lake City, FL 32025-5874

[james.knight@dot.state.fl.us](mailto:james.knight@dot.state.fl.us)

(386) 961-7707 or

(800) 749-2967 ext. 7707



# Project Information

[www.sr9b.com](http://www.sr9b.com)



***Thank You!***

